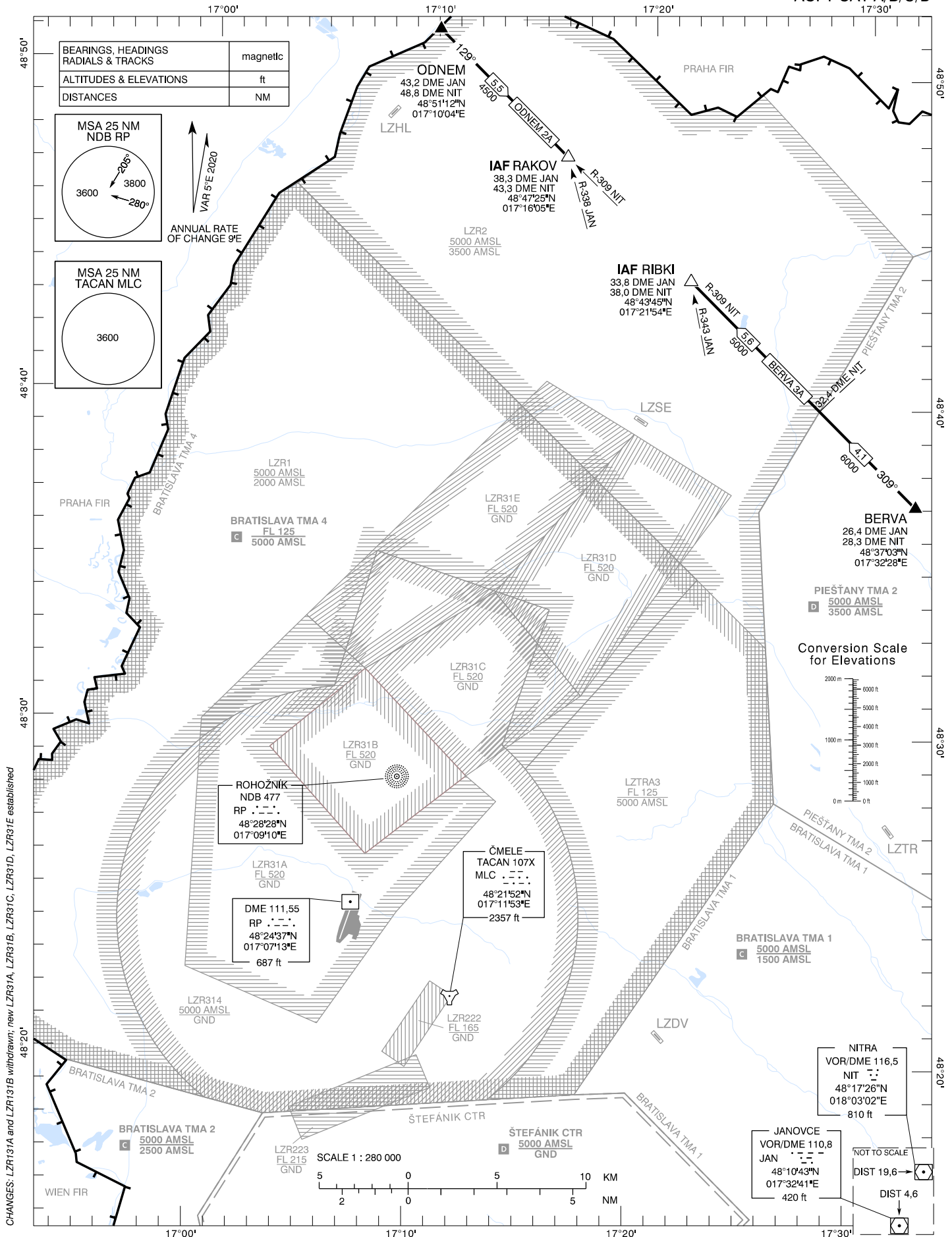


STANDARD ARRIVAL CHART -  
INSTRUMENT ( STAR ) - ICAO

TRANSITION ALTITUDE  
10 000 ft

MALACKY RADAR 120,750 (259,625)  
MALACKY TOWER 129,575 (120,750)

MALACKY (LZMC)  
STAR RWY 19  
ACFT CAT A/B/C/D



CHANGES: LZR131A and LZR131B withdrawn; new LZR31A, LZR31B, LZR31D, LZR31E established